



THE MARTIN
at MERIDIAN

Barcelona 'A'

| 2 BEDROOM 2 BATH | +/- 1155 SQ. FT. | 1/8" = 1'-0" | LEVELS 2-8

DESCRIPTION:

A corner unit with balcony, this two bedroom/two bath unit offers exceptional views of Downtown Tampa and The Gateway at Meridian Ave.

All dimensions are approximate and subject to change.

Air conditioned square footage is calculated from the outside perimeter of the exterior walls and half of the demising wall.

Based on building material changes, prices and availability, features and specifications are subject to change without notice. The developer reserves the right to alter the design, vary feature positions or substitute materials of comparable value as deemed advisable or necessary by Builder or Architect.

Prices, plans, dimensions and specifications subject to change without notice. Void where prohibited by law.



DOWNTOWN RESIDENCES WITH UNEXPECTED AMENITIES



ORAL REPRESENTATIONS CANNOT BE RELIED UPON AS CORRECTLY STATING REPRESENTATIONS OF THE DEVELOPER. FOR CORRECT REPRESENTATIONS, MAKE A REFERENCE TO THIS BROCHURE AND TO THE DOCUMENTS REQUIRED BY SECTION 718.503, FLORIDA STATUTES, TO BE FURNISHED BY THE DEVELOPER TO A BUYER OR LESSEE.



THE MARTIN
at MERIDIAN

Barcelona 'B'

| 2 BEDROOM 2 BATH | +/- 1140 SQ. FT. | 1/8" = 1-0' | LEVELS 2-8

DESCRIPTION:

A two bedroom/two bath unit with balcony offering exceptional views of Downtown Tampa and The Gateway at Meridian Ave.

All dimensions are approximate and subject to change.

Air conditioned square footage is calculated from the outside perimeter of the exterior walls and half of the demising wall.

Based on building material changes, prices and availability, features and specifications are subject to change without notice. The developer reserves the right to alter the design, vary feature positions or substitute materials of comparable value as deemed advisable or necessary by Builder or Architect.

Prices, plans, dimensions and specifications subject to change without notice. Void where prohibited by law.





THE MARTIN
at MERIDIAN

Barcelona 'C'

| 2 BEDROOM 2 BATH | +/- 1155 SQ. FT. | 1/8" = 1'-0" | LEVELS 2-8

DESCRIPTION:

A corner unit with balcony, this two bedroom/two bath unit offers exceptional views of Downtown Tampa and The Gateway at Meridian Ave.

All dimensions are approximate and subject to change.

Air conditioned square footage is calculated from the outside perimeter of the exterior walls and half of the demising wall.

Based on building material changes, prices and availability, features and specifications are subject to change without notice. The developer reserves the right to alter the design, vary feature positions or substitute materials of comparable value as deemed advisable or necessary by Builder or Architect.

Prices, plans, dimensions and specifications subject to change without notice. Void where prohibited by law.





THE MARTIN
at MERIDIAN

Barcelona 'D'

| 2 BEDROOM 2 BATH | +/- 1140 SQ. FT. | 1/8" = 1-0' | LEVELS 8-22

DESCRIPTION:

A two bedroom/two bath unit with balcony and floor to ceiling glass windows with views of Ybor City.

All dimensions are approximate and subject to change.

Air conditioned square footage is calculated from the outside perimeter of the exterior walls and half of the demising wall.

Based on building material changes, prices and availability, features and specifications are subject to change without notice. The developer reserves the right to alter the design, vary feature positions or substitute materials of comparable value as deemed advisable or necessary by Builder or Architect.

Prices, plans, dimensions and specifications subject to change without notice. Void where prohibited by law.





THE MARTIN
at MERIDIAN

Barcelona 'E'

| 2 BEDROOM 2 BATH | +/- 1155 SQ. FT. | 1/8" = 1'-0" | LEVELS 8-22

DESCRIPTION:

A corner unit with balcony, this two bedroom/two bath unit has floor to ceiling glass windows with views of the Park below, Ybor City, and The Port of Tampa.

All dimensions are approximate and subject to change.

Air conditioned square footage is calculated from the outside perimeter of the exterior walls and half of the demising wall.

Based on building material changes, prices and availability, features and specifications are subject to change without notice. The developer reserves the right to alter the design, vary feature positions or substitute materials of comparable value as deemed advisable or necessary by Builder or Architect.

Prices, plans, dimensions and specifications subject to change without notice. Void where prohibited by law.



DOWNTOWN RESIDENCES WITH UNEXPECTED AMENITIES



ORAL REPRESENTATIONS CANNOT BE RELIED UPON AS CORRECTLY STATING REPRESENTATIONS OF THE DEVELOPER. FOR CORRECT REPRESENTATIONS, MAKE A REFERENCE TO THIS BROCHURE AND TO THE DOCUMENTS REQUIRED BY SECTION 718.503, FLORIDA STATUTES, TO BE FURNISHED BY THE DEVELOPER TO A BUYER OR LESSEE.



THE MARTIN
at MERIDIAN

Monaco 'F'

| 2 BEDROOM 2 BATH | +/- 1220 SQ. FT. | 1/8" = 1'-0" | LEVELS 8-18

DESCRIPTION:

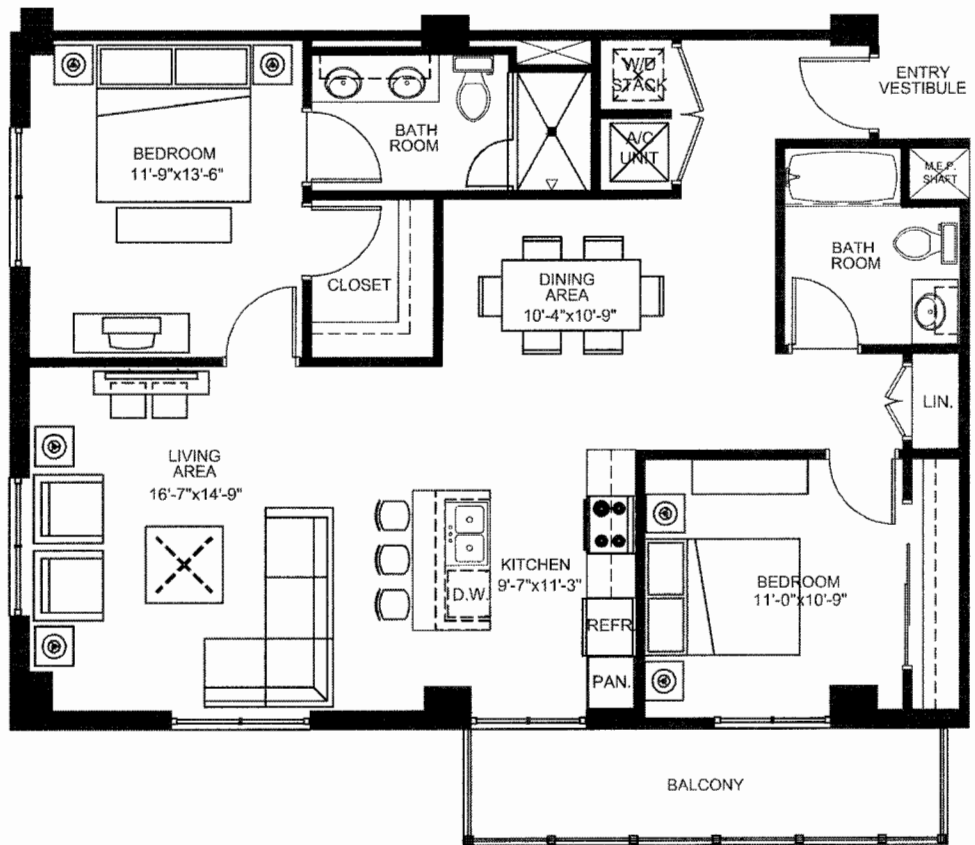
A corner unit with oversize balcony, this two bedroom/two bath unit has a spacious living area offering views of the pool amenities deck and Downtown Tampa. Select units provide stunning views of The Channel District.

All dimensions are approximate and subject to change.

Air conditioned square footage is calculated from the outside perimeter of the exterior walls and half of the demising wall.

Based on building material changes, prices and availability, features and specifications are subject to change without notice. The developer reserves the right to alter the design, vary feature positions or substitute materials of comparable value as deemed advisable or necessary by Builder or Architect.

Prices, plans, dimensions and specifications subject to change without notice. Void where prohibited by law.



DOWNTOWN RESIDENCES WITH UNEXPECTED AMENITIES



ORAL REPRESENTATIONS CANNOT BE RELIED UPON AS CORRECTLY STATING REPRESENTATIONS OF THE DEVELOPER. FOR CORRECT REPRESENTATIONS, MAKE A REFERENCE TO THIS BROCHURE AND TO THE DOCUMENTS REQUIRED BY SECTION 718.503, FLORIDA STATUTES, TO BE FURNISHED BY THE DEVELOPER TO A BUYER OR LESSEE.



THE MARTIN
at MERIDIAN

Monaco 'G'

| 2 BEDROOM 2 BATH | +/- 1220 SQ. FT. | 1/8" = 1-0' | LEVELS 8-18

DESCRIPTION:

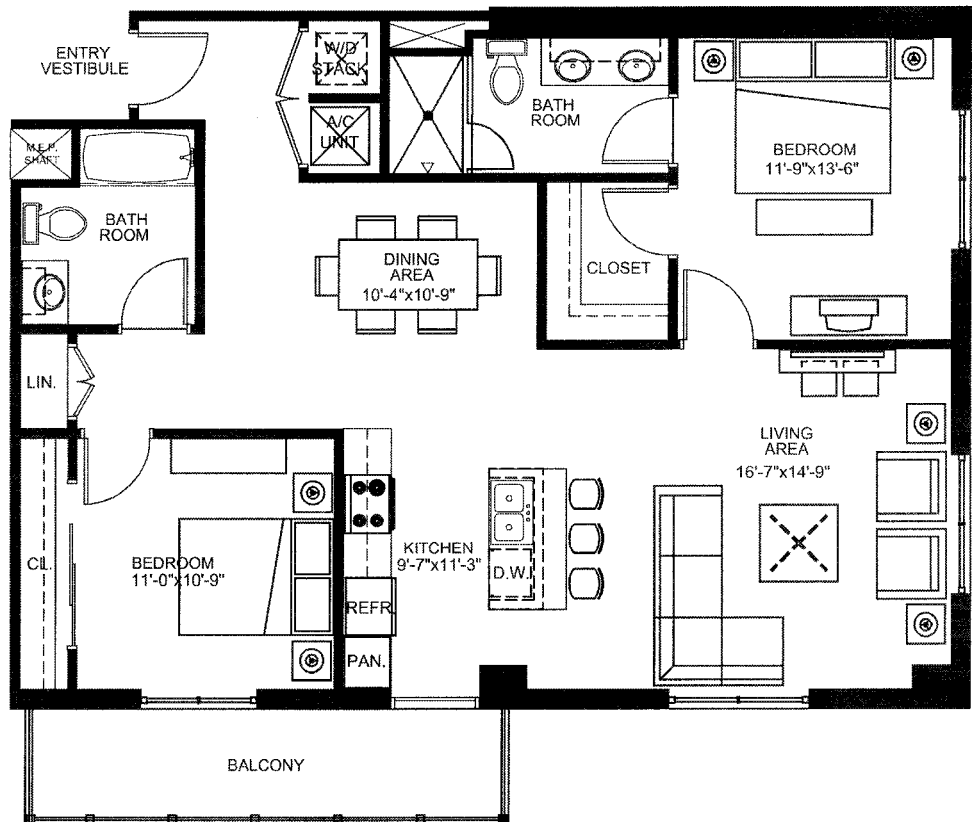
A corner unit with oversized balcony, this two bedroom/two bath unit has a spacious living area offering views of the Park below and The Port of Tampa. Select units provide stunning views of The Channel District.

All dimensions are approximate and subject to change.

Air conditioned square footage is calculated from the outside perimeter of the exterior walls and half of the demising wall.

Based on building material changes, prices and availability, features and specifications are subject to change without notice. The developer reserves the right to alter the design, vary feature positions or substitute materials of comparable value as deemed advisable or necessary by Builder or Architect.

Prices, plans, dimensions and specifications subject to change without notice. Void where prohibited by law.



DOWNTOWN RESIDENCES WITH UNEXPECTED AMENITIES



ORAL REPRESENTATIONS CANNOT BE RELIED UPON AS CORRECTLY STATING REPRESENTATIONS OF THE DEVELOPER. FOR CORRECT REPRESENTATIONS, MAKE A REFERENCE TO THIS BROCHURE AND TO THE DOCUMENTS REQUIRED BY SECTION 718.503, FLORIDA STATUTES, TO BE FURNISHED BY THE DEVELOPER TO A BUYER OR LESSEE.



THE MARTIN
at MERIDIAN

Lisbon 'H'

| 1 BEDROOM 1 BATH | +/- 795 SQ. FT. | 1/8" = 1'-0" | LEVELS 8-22

DESCRIPTION:

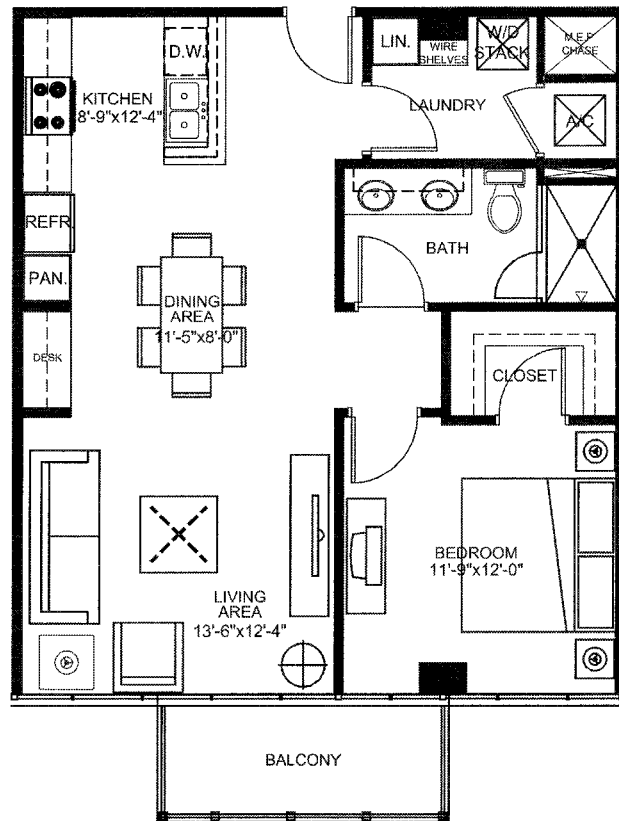
This large one bedroom/one bath unit with balcony features floor to ceiling glass windows with views of Ybor City.

All dimensions are approximate and subject to change.

Air conditioned square footage is calculated from the outside perimeter of the exterior walls and half of the demising wall.

Based on building material changes, prices and availability, features and specifications are subject to change without notice. The developer reserves the right to alter the design, vary feature positions or substitute materials of comparable value as deemed advisable or necessary by Builder or Architect.

Prices, plans, dimensions and specifications subject to change without notice. Void where prohibited by law.



DOWNTOWN RESIDENCES WITH UNEXPECTED AMENITIES



ORAL REPRESENTATIONS CANNOT BE RELIED UPON AS CORRECTLY STATING REPRESENTATIONS OF THE DEVELOPER. FOR CORRECT REPRESENTATIONS, MAKE A REFERENCE TO THIS BROCHURE AND TO THE DOCUMENTS REQUIRED BY SECTION 718.503, FLORIDA STATUTES, TO BE FURNISHED BY THE DEVELOPER TO A BUYER OR LESSEE.



THE MARTIN
at MERIDIAN

Lisbon '1'

| 1 BEDROOM 1 BATH | +/- 795 SQ. FT. | 1/8" = 1'-0" | LEVELS 9-20

DESCRIPTION:

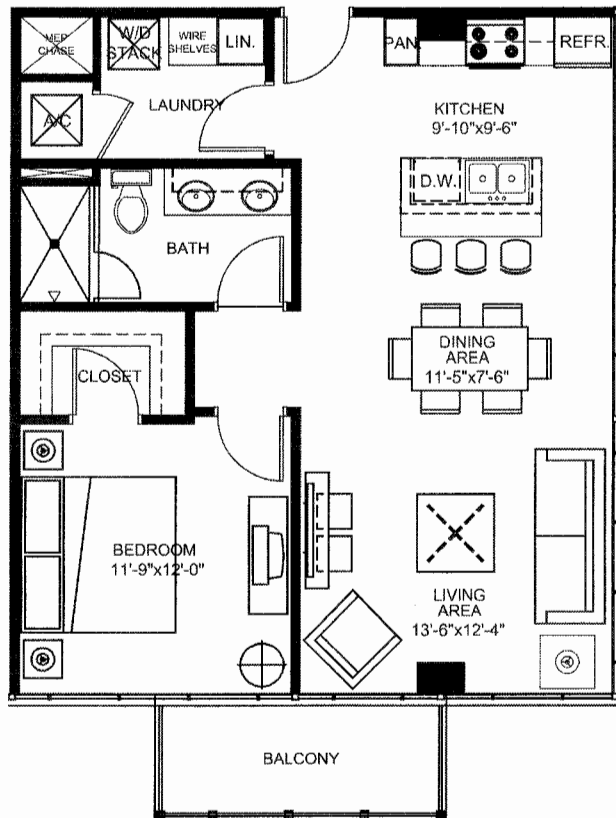
A unique one bedroom/one bath corner unit with balcony, this unit features floor to ceiling glass windows and offers exceptional views of Downtown Tampa and Ybor City.

All dimensions are approximate and subject to change.

Air conditioned square footage is calculated from the outside perimeter of the exterior walls and half of the demising wall.

Based on building material changes, prices and availability, features and specifications are subject to change without notice. The developer reserves the right to alter the design, vary feature positions or substitute materials of comparable value as deemed advisable or necessary by Builder or Architect.

Prices, plans, dimensions and specifications subject to change without notice. Void where prohibited by law.



DOWNTOWN RESIDENCES WITH UNEXPECTED AMENITIES



ORAL REPRESENTATIONS CANNOT BE RELIED UPON AS CORRECTLY STATING REPRESENTATIONS OF THE DEVELOPER. FOR CORRECT REPRESENTATIONS, MAKE A REFERENCE TO THIS BROCHURE AND TO THE DOCUMENTS REQUIRED BY SECTION 718.503, FLORIDA STATUTES, TO BE FURNISHED BY THE DEVELOPER TO A BUYER OR LESSEE.



THE MARTIN
at MERIDIAN

Vienna 'J'

| 1 BEDROOM 1 BATH | +/- 690 SQ. FT. | 1/8" = 1-0' | LEVELS 8-20

DESCRIPTION:

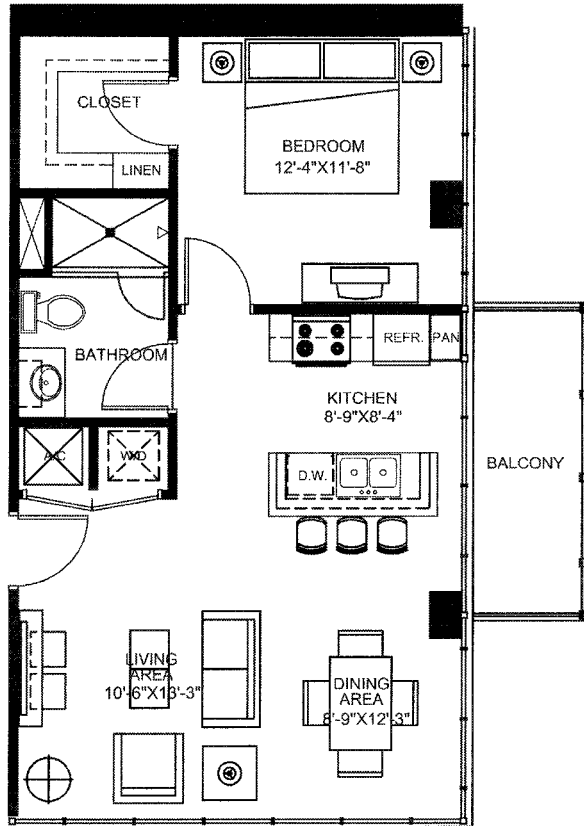
This efficient one bedroom/one bath corner unit with balcony and floor to ceiling glass windows is sure to be one of our most popular floor plans. Views will include the pool amenities deck and Downtown Tampa.

All dimensions are approximate and subject to change.

Air conditioned square footage is calculated from the outside perimeter of the exterior walls and half of the demising wall.

Based on building material changes, prices and availability, features and specifications are subject to change without notice. The developer reserves the right to alter the design, vary feature positions or substitute materials of comparable value as deemed advisable or necessary by Builder or Architect.

Prices, plans, dimensions and specifications subject to change without notice. Void where prohibited by law.



DOWNTOWN RESIDENCES WITH UNEXPECTED AMENITIES



ORAL REPRESENTATIONS CANNOT BE RELIED UPON AS CORRECTLY STATING REPRESENTATIONS OF THE DEVELOPER. FOR CORRECT REPRESENTATIONS, MAKE A REFERENCE TO THIS BROCHURE AND TO THE DOCUMENTS REQUIRED BY SECTION 718.503, FLORIDA STATUTES, TO BE FURNISHED BY THE DEVELOPER TO A BUYER OR LESSEE.



THE MARTIN
at MERIDIAN

Vienna 'K'

| 1 BEDROOM 1 BATH | +/- 690 SQ. FT. | 1/8" = 1'-0" | LEVELS 8-22

DESCRIPTION:

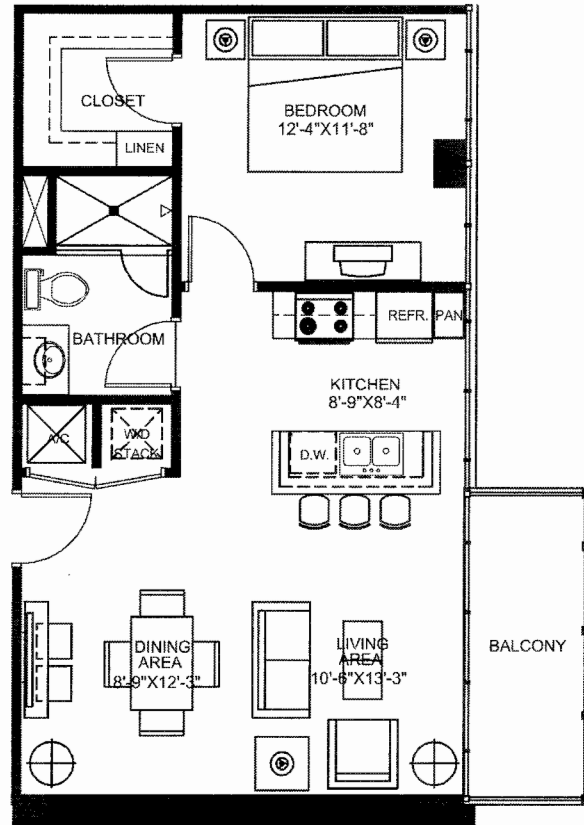
This is an exceptional one bedroom/one bath unit with balcony and floor to ceiling glass windows offering views of the pool amenities deck and Downtown Tampa.

All dimensions are approximate and subject to change.

Air conditioned square footage is calculated from the outside perimeter of the exterior walls and half of the demising wall.

Based on building material changes, prices and availability, features and specifications are subject to change without notice. The developer reserves the right to alter the design, vary feature positions or substitute materials of comparable value as deemed advisable or necessary by Builder or Architect.

Prices, plans, dimensions and specifications subject to change without notice. Void where prohibited by law.





THE MARTIN
at MERIDIAN

Dublin 'L'

| STUDIO | +/- 646 SQ. FT. | 1/8" = 1-0' | LEVELS 8-22

DESCRIPTION:

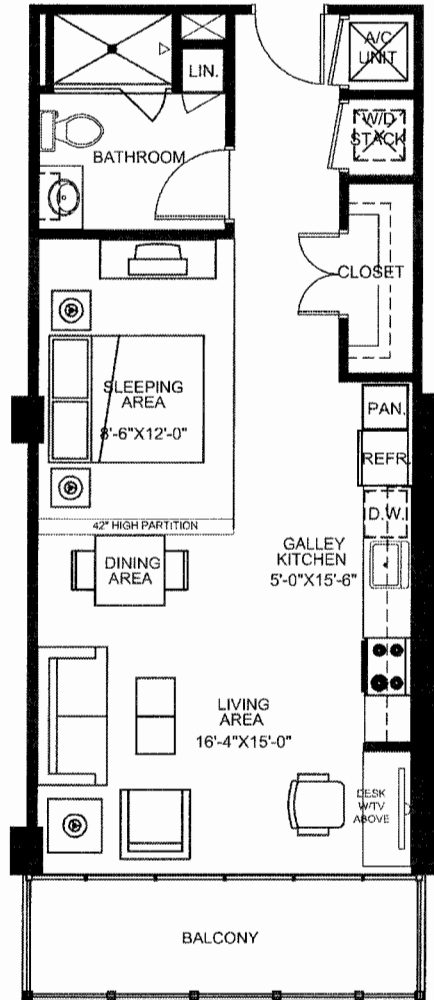
A great alternative to apartment living, this one bedroom/one bath studio style unit has floor to ceiling glass with a full balcony. Views will be the Park below, Ybor City, and The Port of Tampa.

All dimensions are approximate and subject to change.

Air conditioned square footage is calculated from the outside perimeter of the exterior walls and half of the demising wall.

Based on building material changes, prices and availability, features and specifications are subject to change without notice. The developer reserves the right to alter the design, vary feature positions or substitute materials of comparable value as deemed advisable or necessary by Builder or Architect.

Prices, plans, dimensions and specifications subject to change without notice. Void where prohibited by law.



DOWNTOWN RESIDENCES WITH UNEXPECTED AMENITIES



ORAL REPRESENTATIONS CANNOT BE RELIED UPON AS CORRECTLY STATING REPRESENTATIONS OF THE DEVELOPER. FOR CORRECT REPRESENTATIONS, MAKE A REFERENCE TO THIS BROCHURE AND TO THE DOCUMENTS REQUIRED BY SECTION 718.503, FLORIDA STATUTES, TO BE FURNISHED BY THE DEVELOPER TO A BUYER OR LESSEE.



THE MARTIN
at MERIDIAN

Dublin 'M'

| STUDIO | +/- 646 SQ. FT. | 1/8" = 1-0' | LEVELS 8-22

DESCRIPTION:

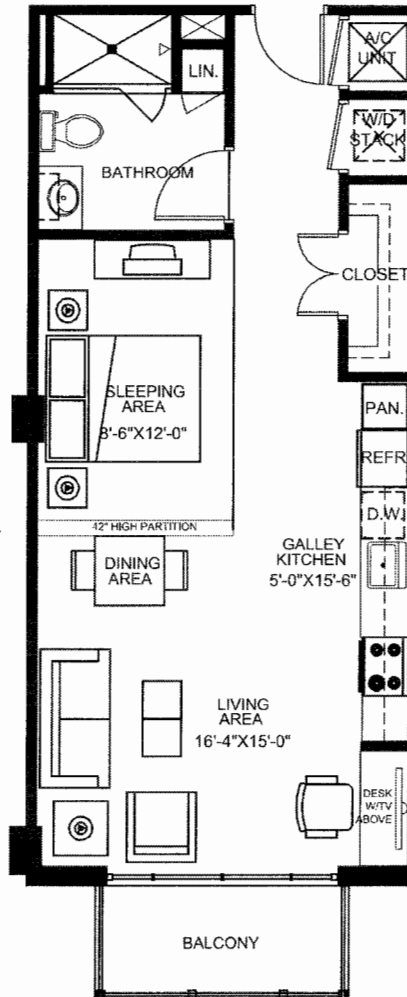
This efficient one bedroom/one bath studio style unit with balcony brings urban lifestyle to reality. Your choice of unit provides views of the pool amenities deck and Downtown Tampa, or the Park below and The Port of Tampa.

All dimensions are approximate and subject to change.

Air conditioned square footage is calculated from the outside perimeter of the exterior walls and half of the demising wall.

Based on building material changes, prices and availability, features and specifications are subject to change without notice. The developer reserves the right to alter the design, vary feature positions or substitute materials of comparable value as deemed advisable or necessary by Builder or Architect.

Prices, plans, dimensions and specifications subject to change without notice. Void where prohibited by law.





THE MARTIN
at MERIDIAN

Milan 'N'

| JR 2 BEDROOM 1 BATH | +/- 970 SQ. FT. | 1/8" = 1'-0" | LEVELS 8-20

DESCRIPTION:

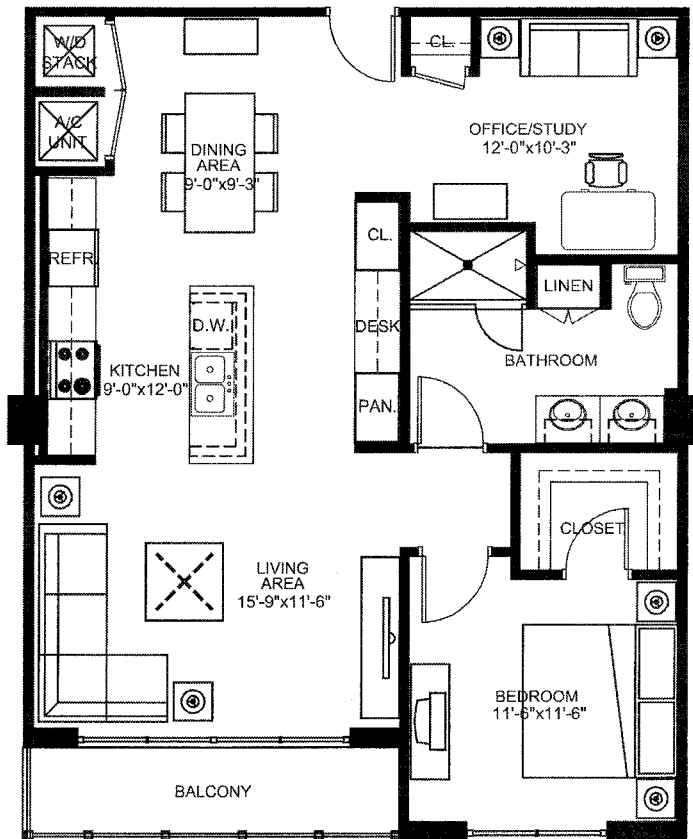
This junior two bedroom/one bath unit with inset balcony has a master bedroom and a guest/office/study room. Your choice of unit provides views of the pool amenities deck and Downtown Tampa, or the Park below and The Port of Tampa.

All dimensions are approximate and subject to change.

Air conditioned square footage is calculated from the outside perimeter of the exterior walls and half of the demising wall.

Based on building material changes, prices and availability, features and specifications are subject to change without notice. The developer reserves the right to alter the design, vary feature positions or substitute materials of comparable value as deemed advisable or necessary by Builder or Architect.

Prices, plans, dimensions and specifications subject to change without notice. Void where prohibited by law.



DOWNTOWN RESIDENCES WITH UNEXPECTED AMENITIES



ORAL REPRESENTATIONS CANNOT BE RELIED UPON AS CORRECTLY STATING REPRESENTATIONS OF THE DEVELOPER. FOR CORRECT REPRESENTATIONS, MAKE A REFERENCE TO THIS BROCHURE AND TO THE DOCUMENTS REQUIRED BY SECTION 718.503, FLORIDA STATUTES, TO BE FURNISHED BY THE DEVELOPER TO A BUYER OR LESSEE.