

Regency Suites Resort Premier Hotel Condominium



Conceptual illustration only. Actual dimensions specifications, architectural details and designs subject to change without notice. This advertising is not an offer to residents of NJ, CT, HI, ID, IL, OR, NY or any other jurisdiction where prohibited, unless the property has been registered or exemptions are available.

Lake Buena Vista, Orlando, Florida

Regency Suites Resort

Location, Location, Location !



❖ Located in the Lake Buena Vista area, adjacent to Dolly Parton's Dixie Stampede and the Orlando Premium Outlet Mall, the #1 vacation destination in the world is now home of the **Regency Suites Resort**.

❖ 325 units Hotel Condominium, featuring Executive Suites over 600 sq. ft. and 2 bedrooms 2 baths residences from over 1,000 sq. ft.

❖ Endless choices of restaurants, offering some of the finest dinner shows and culinary experiences.

❖ **Regency Suites Resort** is just steps away from the Orlando Premium Outlet Mall, a discount Designer's Shopping Mall that includes world renowned brands.

❖ Professional Sports : NBA's Orlando Magic, NFL's Tampa Bay Buccaneers, and Orlando Predators.

❖ Fifty minutes from some of the world's most beautiful beaches, including Cocoa Beach, Clearwater Beach and world-famous Daytona Beach.

❖ Freshwater fishing, and water skiing within minutes

❖ Orlando's tropical weather allows year round outdoors fun!

❖ Over 100 Golf Courses, Water Skiing, Fishing, Night Life, Theater, Orlando Ballet, Sea World, Cirque Du Soleil, Cape Canaveral Summer Camps... **Orlando has it all!**

Regency Suites Resort

Located in the Lake Buena Vista Area

- **325 Hotel Condominium Units**
- **Executive Suites, One and Two Bedrooms**
- **Full Ownership**
- **Fully Furnished and Equipped**
- **First Class Hotel Amenities**
- **Premier Management Company**
- **Reservation System**
- **Daily Housekeeping**
- **Concierge Service**
- **Business Center**
- **Laundry Services**
- **Transportation Services**

Regency Suites Resort

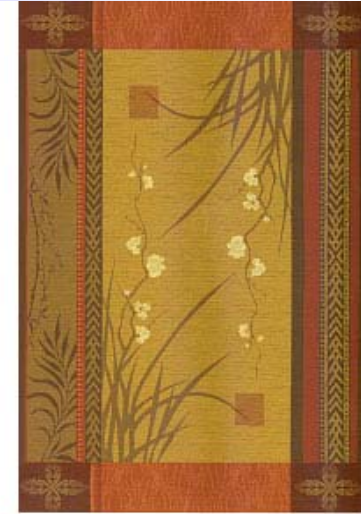
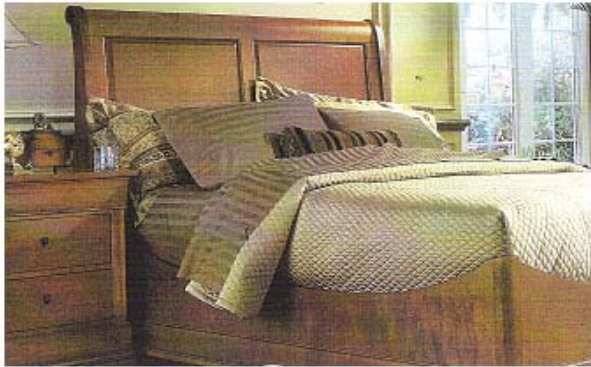
Features

- Elegantly design
- Fully furnished and equipped
- Plasma TV's
- DVD and digital cable
- High-speed internet access
- Business center
- Lush landscaping
- Beautiful entrance with water features
- First class appliances

Amenities

- Elegant lobby
- Concierge services
- Swimming pool
- Large meeting rooms
- Fitness Center
- Complimentary breakfast buffet
- Daily maid service
- Preferred golf rates and tee offs
- Other services available upon request

Elegance and Quality in Every Aspect

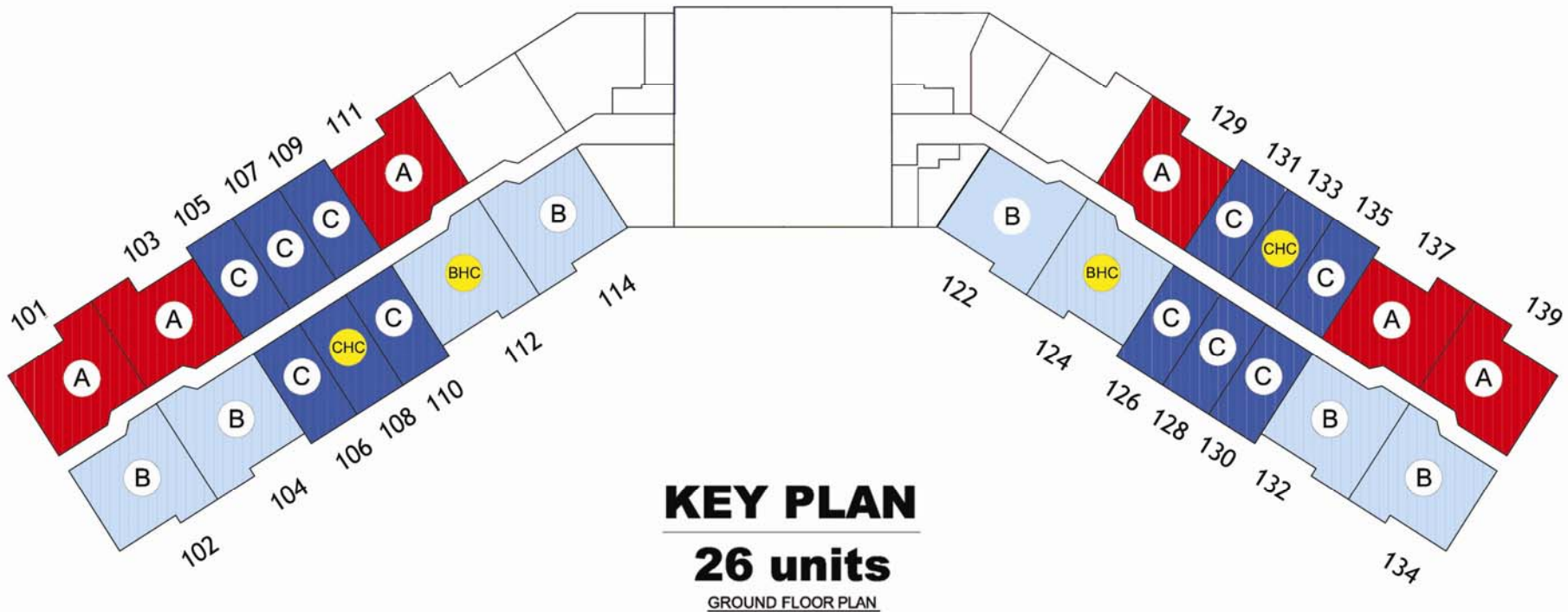


Location, Location, Location

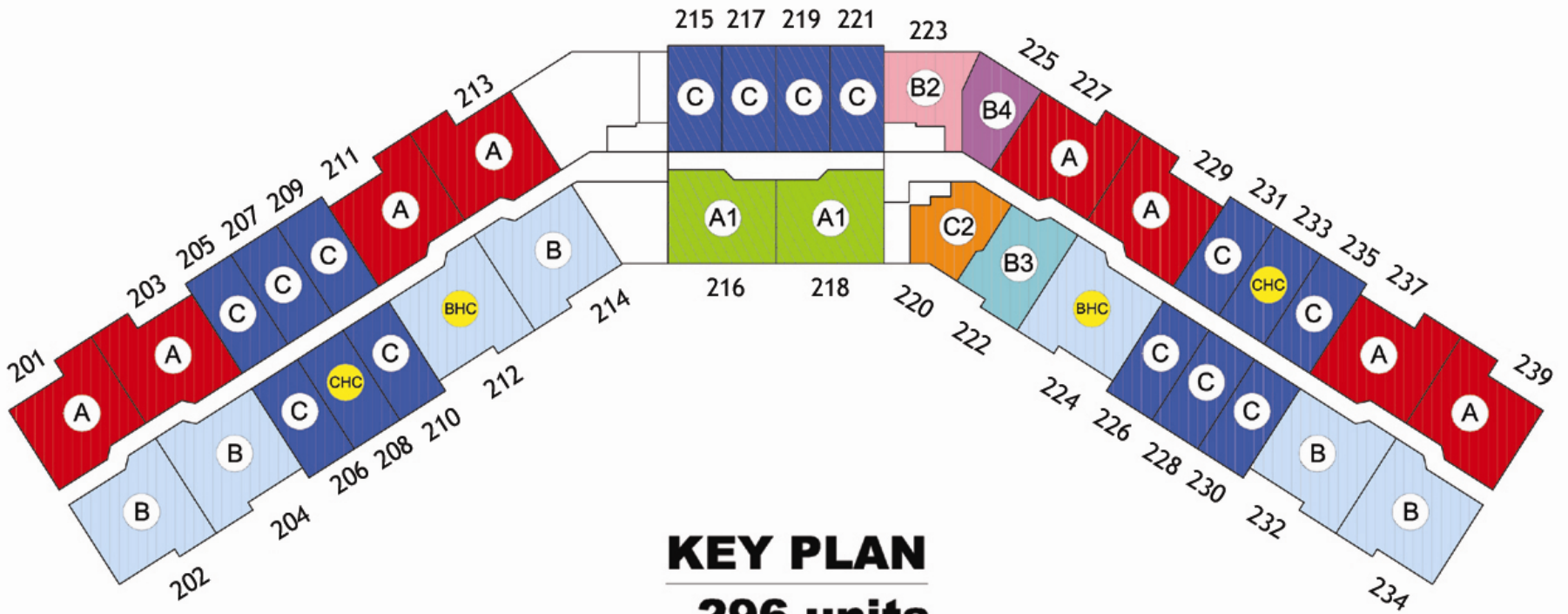


Strategically located between International Drive and Interstate 4.

Ground Floor Plan



2nd-9th Floor Plan

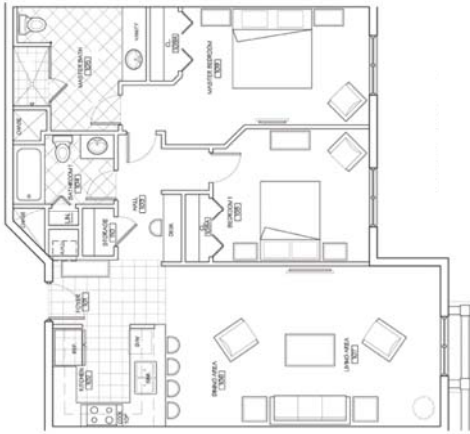


KEY PLAN

296 units

2nd-9th TYPICAL FLOOR PLAN

Floor Plans



Unit A "Ruby" 2BD/2B
1,163 sq.ft.



Unit A1 "Jade" 2BD/2B
1,076 sq.ft.



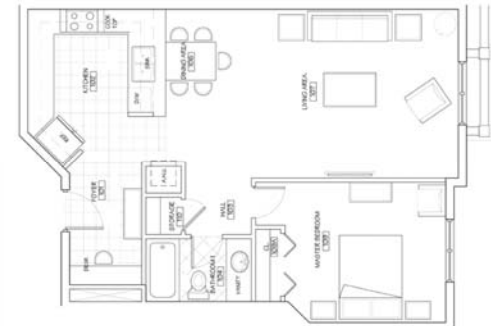
Unit B "Opal" 2BD/2B
1,184 sq.ft.



Unit B-hc "Opal A" 2BD/2B
1,184 sq.ft.

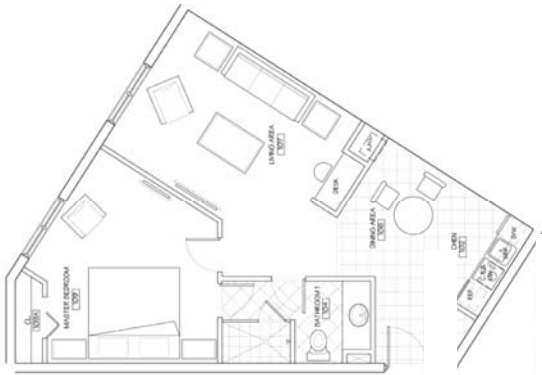


Unit B2 "Topaz" 1BD/1B
650 sq.ft.



Unit B3 "Amethyst" 1BD/1B
828 sq.ft.

Floor Plans



Unit B4 "Onix" 1BD/1B
672 sq.ft.



Unit C "Sapphire" 1BD/1B
636 Sq.ft.



Unit C-hc "Sapphire A" 1BD/1B
636 sq.ft.



Unit C2 "Quartz" 1BD/1B
701 sq.ft.

Unit C-2-701 s.f.

**For more information
Please contact:**

Mark Goldberg

**629 Cherry Laurel Street
Minneola, FL 34715
Office: 352.394.3710
Fax: 407.386.3377
Cell: 321.517.0001**



Millenium Contact:
Elizabeth Arnaud or Rhayza Rosias