

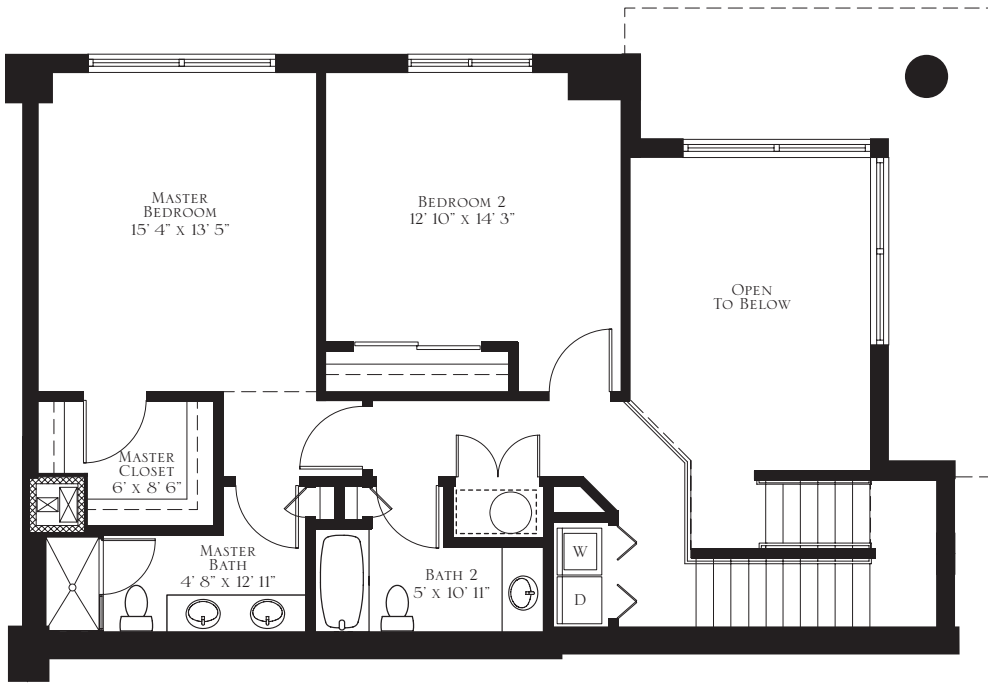
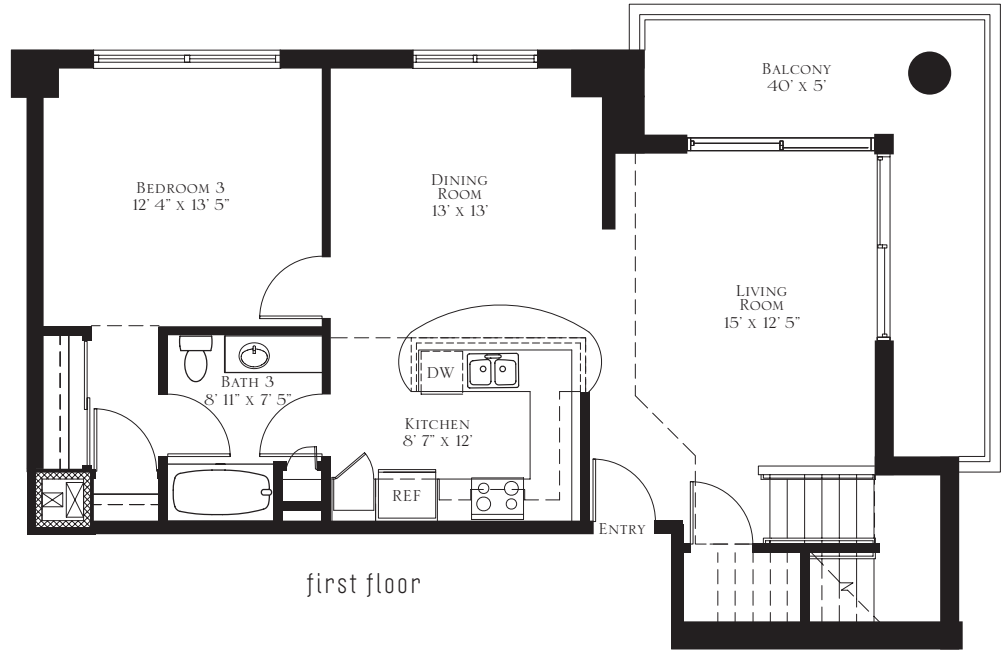
# M O N A R C H

(407) 426-8452  
 MONARCHORLANDO.COM

## kempe

3 BEDROOM } 3 BATHS

LIVING:	2,114
BALCONY:	200
<b>TOTAL SPACE:</b>	<b>2,312</b>



Floor plans are artist representations and may vary somewhat in precise detail and dimension. ORAL REPRESENTATIONS CANNOT BE RELIED UPON AS CORRECTLY STATING THE REPRESENTATIONS OF THE DEVELOPER. FOR CORRECT REPRESENTATIONS, REFERENCE SHOULD BE MADE TO THE DOCUMENTS REQUIRED BY SECTION 718.503, FLORIDA STATUTES, TO BE FURNISHED BY A DEVELOPER TO A BUYER OR LESSEE.