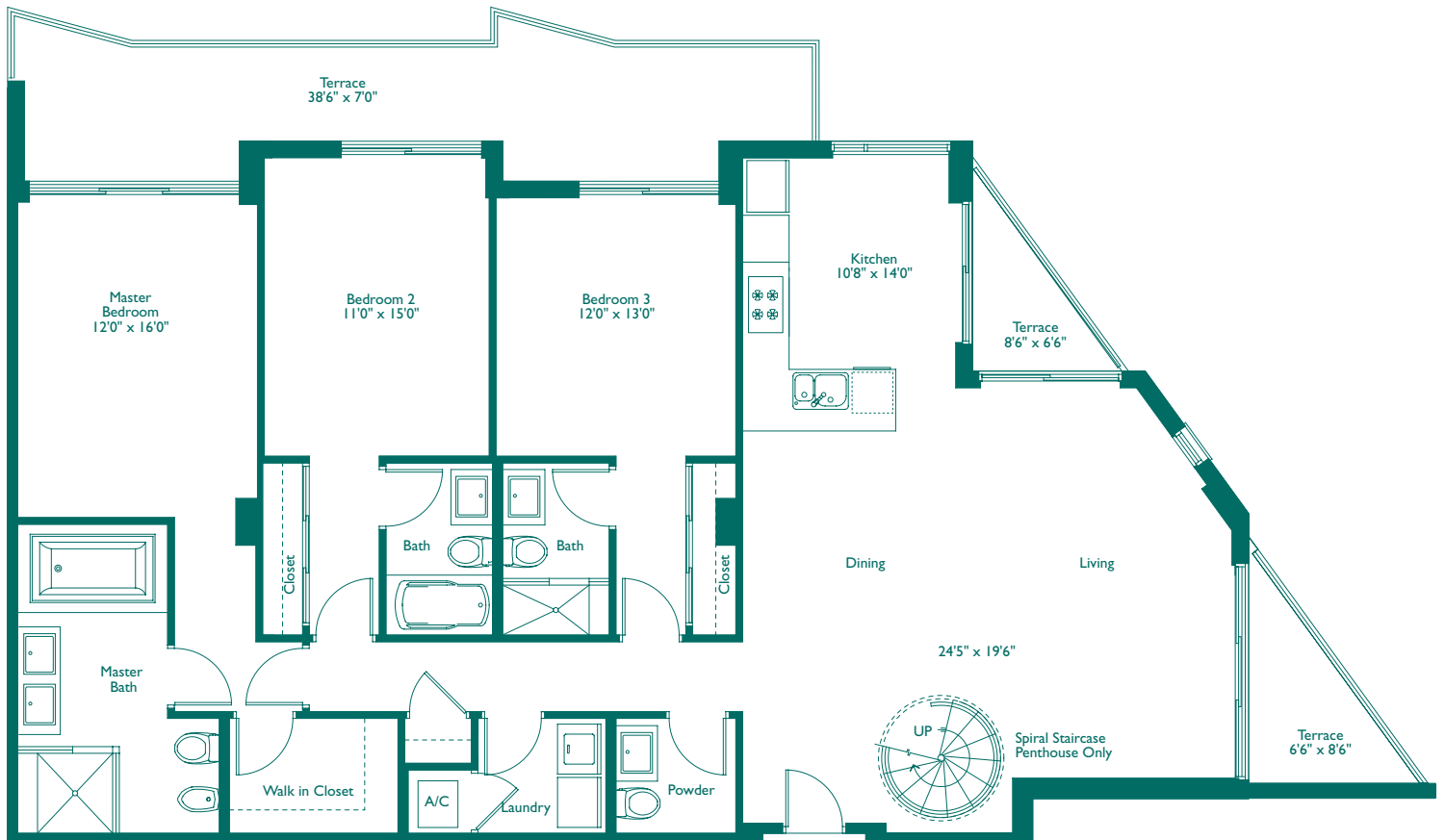


# Unit G

3 Bedroom, 3 1/2 Bath  
2,295 Total Sq. Ft. - 213.21 m<sup>2</sup>

**EMERALD**  
AT · BRICKELL



## THE PERFECT SETTING

Southeast 14th Street and Brickell Bay Drive  
1, 2, 3 bedrooms and penthouse residences.

Sales Center Located at:  
1414 Brickell Avenue, Suite 2, Miami, FL 33131  
Tel: 305.379.9500 Fax: 305.379.9510

[www.emeraldatabrickell.com](http://www.emeraldatabrickell.com)

Exclusively represented by Hamilton Realty

Broker Participation Welcome. Prices, features, and specifications are subject to change without notice. Illustrations are artists conception. All dimensions are approximate and subject to change without notice. We are pledged to the letter and spirit of U.S. policy for the achievement of equal housing opportunity throughout the Nation. We encourage and support an affirmative advertising and marketing program in which there are no barriers to obtaining housing because of race, color, religion, sex, handicap, familial status, or national origin. ORAL REPRESENTATIONS CANNOT BE RELIED UPON AS CORRECTLY STATING REPRESENTATIONS OF THE DEVELOPER. FOR CORRECT REPRESENTATIONS, MAKE REFERENCE TO THIS ADVERTISEMENT AND TO THE DOCUMENTS REQUIRED BY SECTION 718.503, FLORIDA STATUTES, TO BE FURNISHED BY A DEVELOPER TO A BUYER OR LESSEE.